

## 24/7 REMOTE WEATHER MONITORING

It does not matter where your project is located or how big the site is. Our GSM technology gives you the freedom of unlimited wireless range and access to your data while you are on the move.

WINDCRANE™ combines a rugged industrial-grade design for the toughest site constructions, combined with the wind measurement standards accuracy [IEC-61400] and its 5 year guarantee.



### SAVE MONEY

Forget about the costs caused by weather-related delays. WINDCRANE gives you precise data to justify crane downtime and avoid disputes



### SAVE TIME

Early warnings allow you to react on time and reschedule your work and material deliveries accordingly



### SAVE MAN-HOURS

With WINDCRANE you can assign work according to weather conditions, reducing the risk of costly accidents, and your team



## REACT ULTRAFAST TO CHANGES

The WINDCRANE™ mobile App provides live data on all sites around the clock, anywhere. Keep every single project and individual site in your pocket at all times and get a snapshot of your fleet whenever you need. An invaluable tool for the competent site and operation manager

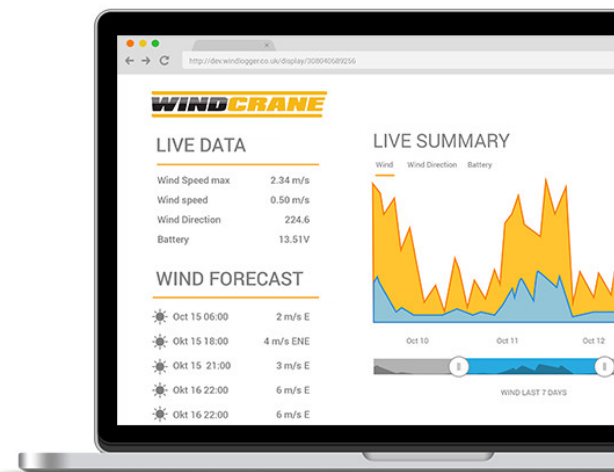
## NEED DETAILED INFORMATION?

Do you need detailed information and access to years of site weather data?  
**WE HAVE GOT IT COVERED!**

You can log into your **WINDCRANE™** web portal and access a much more detailed profile of all your projects and sites.

- Unlimited data storage
- Detailed wind records for every single day, including gusts and wind turbulence
- Your entire fleet within a single web access.

Your construction managers no longer have to rely on generic weather data or worry about downloading and keeping a track record of wind information for every single project. **WINDCRANE™** does this automatically for you 24/7 without user intervention.





## RELY ON THE TOUGHEST KIT

**WINDCRANE™** provides the highest value for your investment:

- Watertight • rustproof • crushproof • corrosion proof • buoyant
- High impact resistance
- Rugged & reliable construction
- WINDCRANE max has 5 year warranty

## WHO IS BEHIND WINDCRANE?

**WINDCRANE™** is brought to you by **Logic Energy**

We are a company with more than 10 years of experience providing energy and weather monitoring services. We specialise in monitoring site conditions for assets spread across various geographic locations, while providing accessibility and control through intuitive web-based dashboards and mobile applications. Our technology has been field-proven under the harshest site conditions, from the frozen Antarctic to some of the driest deserts in America.

More than 10 years measuring the wind to the highest IEC standards

## TECHNICAL SPECIFICATIONS



**130 M+**  
Running Hours

Available Channels :	1 anemometer, wind direction & temperature (other options available on request)
Data Sampling Rate:	1Hz (Conforms to IEC61400)
Resolution:	0.001Hz for wind speed and 0.3 degree for wind vane
Accuracy:	Wind Speed accuracy: better than 100 ppm
	1 anemometer with additional options available on request (wind speed, wind direction, temperature, solar and other weather sensors).
Local memory:	Over 10 years on Industrial microSD card 10 minutes logging
Cloud storage:	Unlimited
Data Transfer:	Automatic data transfer every 10 minutes to WINDCRANE web portal
Operating bands for GSM WINDCRANE:	Quadband (worldwide) - GSM800, DsC1800, GSM850 and DSC1900
Connector:	SMA connector for antenna
Operating temperature WINDCRANE Unit:	-20°C - 70°C
Power Consumption:	Avg 5mA
Sensor Power:	Pulsed 3.3 Vdc,max 20ma total, 10 millisecond excitation pulse each sample period
Power Supply Options:	110-240 V ac 50-60 Hz or 12v rechargeable battery and PV panel kit
Material:	External enclosure: IP67 Copolymer Polypropylene, RTU: Carbon fiber effect ABS
Dimensions:	390x300x155mm - Weight: 2Kg